

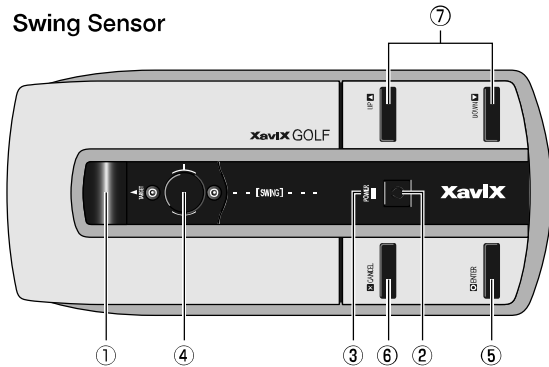
Setup

1 Description of XaviX Golf Swing Sensor and XaviX Golf Clubs.

Package contents of XaviXGOLF

System Cartridge (1)	Swing Sensor (1)	Golf Driver (1)	Golf Putter (1)
User's Guide (1)	Quick Set-up Guide (1)	Registration Card (1)	Serial No. Label (4)

Swing Sensor



Golf Clubs

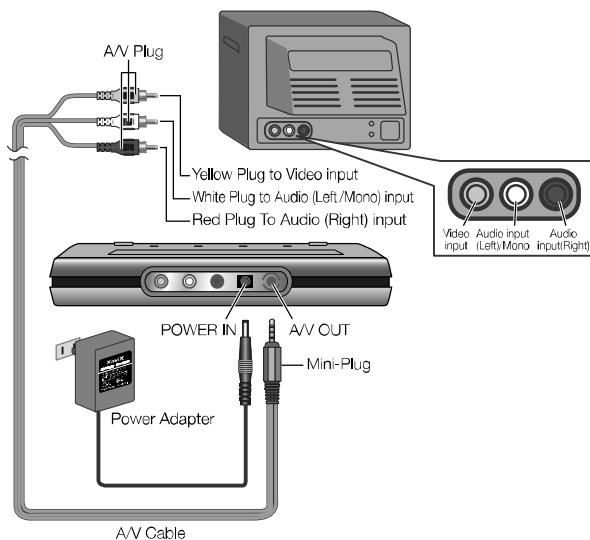


- ① Infra-Red Transmitters
- ② POWER Switch
- ③ Power Indicator
- ④ SENSOR
- ⑤ ENTER Key
- ⑥ CANCEL Key
- ⑦ UP/DOWN arrow keys
- ⑧ Adjuster
- ⑨ Wrist Strap

⚠ Power Indicator
 Turn on Green : On mode
 Orange : Standby mode
 Push any key to restart.

Insert your hand into the wrist strap. Slide the adjuster towards your hand to tighten. Slide the adjuster away from your hand to loosen.

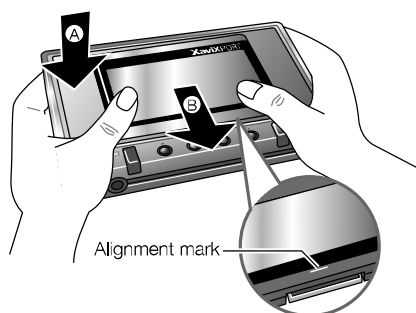
2 Setup XaviXPORT.



Please be sure that the A/V mini-plug is firmly inserted into the back of the XaviXPORT.

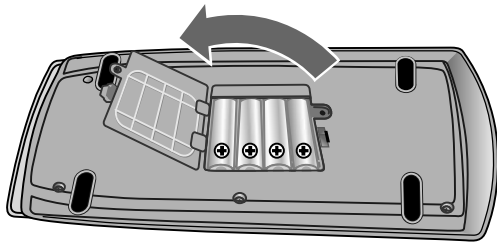
*XaviXPORT typically sold separately unless clearly indicated on the package that the PORT is included.

3 Insert System Cartridge.



INSERT the cartridge into the PORT and slide the cartridge towards the front of the PORT. Press the PORT power switch and check to be sure the green power light is on.

4 Install the batteries into the Swing Sensor.



Batteries are not included. Four (4) AA are required.

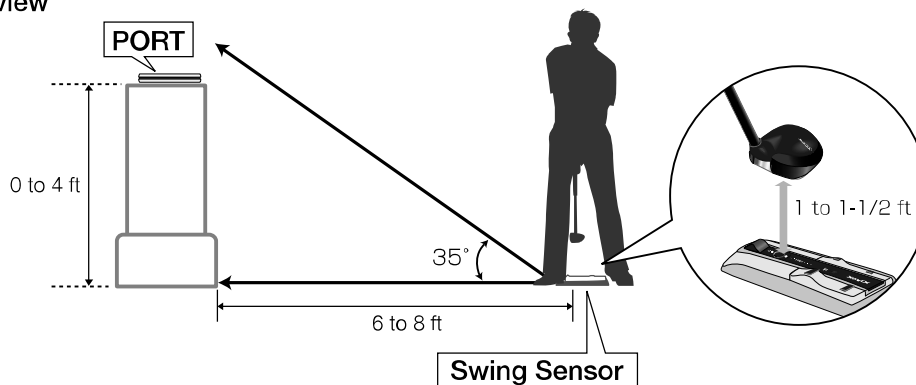
Remove the battery cover from the back of the Swing Sensor using an appropriate screw driver. Insert four AA batteries into the battery compartment as shown and close the battery cover.

Press the POWER Switch on both the XaviX Golf Swing Sensor and the XaviXPORT, and make sure that Power indicators are lit.

How to Golf

1 Distance and Angle.

Side view

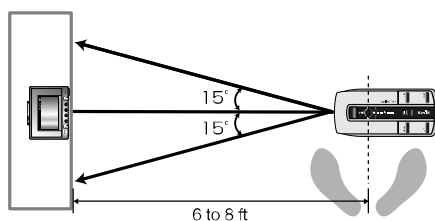


To ensure the safety of yourself and others, please allow adequate space to accommodate a full swing.

Place the Swing Sensor on the floor between 6 feet to 8 feet from your Television. Place the XaviXPORT near, or on your Television approximately 4 feet above the Swing Sensor.

For additional information please refer to the XaviXGolf User's Guide.

Top view

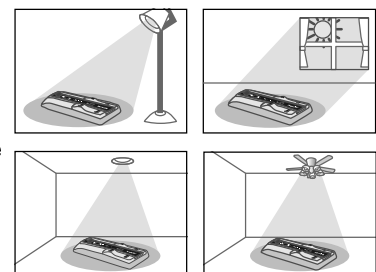


About stance

Where you over the Swing Sensor affects how you strike the ball. This is because sensor in the Swing Sensor detect both the speed and the angle of your Golf Club head.

! If the Golf Club does not work.

Adjust or turn off the room light, then try again. The XaviX Swing Sensor may experience interference if it is used under incandescent electric lamps, mercury lamps and ceiling lights with rotating fans.



2 Enjoy "XaviX GOLF".

For further details, refer to the "XaviXPORT User's Guide" "XaviXGOLF User's Guide".